



Marketed By:
Thomas Lee – 210.771.0639
Email: Soldbylee@aol.com
Starbright Realty

◆◆
719 Loma Doble
Lantana Ridge Subdivision
MLS #665774
\$449,800

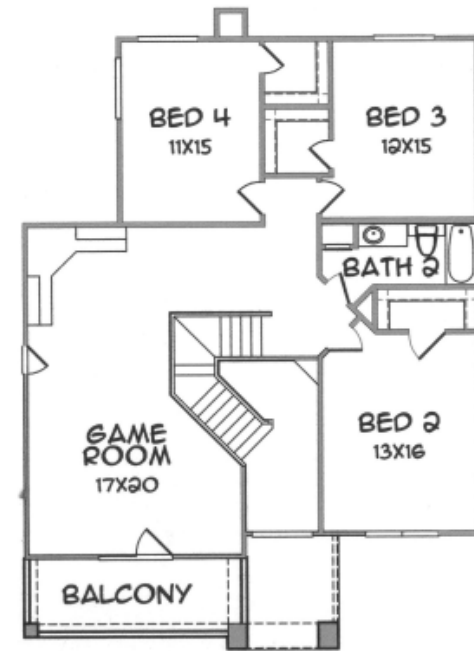
Tour This Home Online At: <http://www.tourfactory.com/341778>

Award Winning Double Diamond Custom Homes Offers:

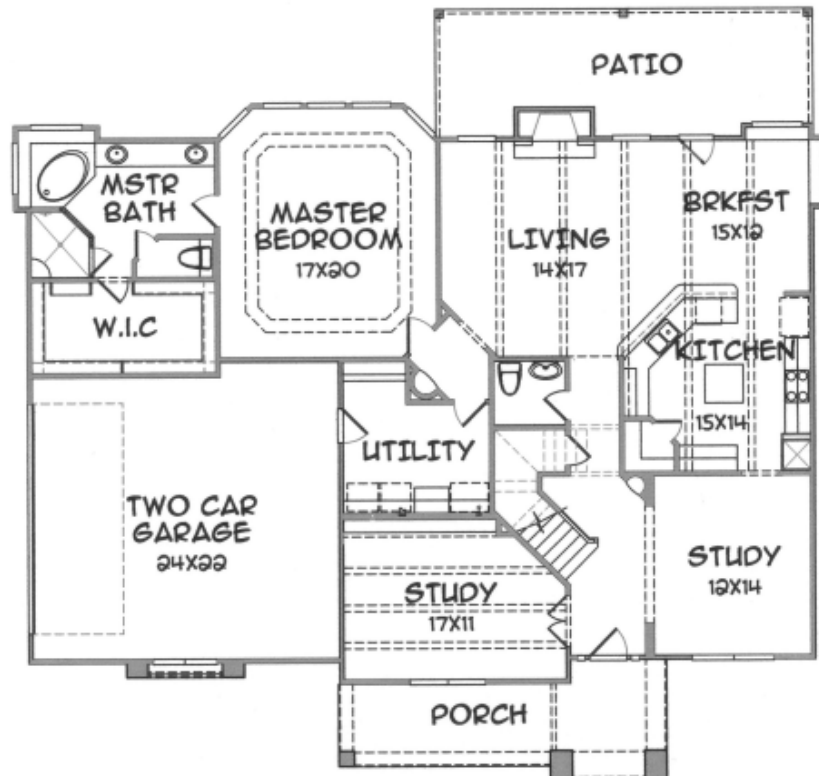
- ◆ Gourmet Island Kitchen With Stainless Appliance Package, 5 Burner Gas Cooktop, 3cm Granite Counters & Custom Alder Wood Cabinets
 - ◆ Master Bath: Separate Shower, Corner Soaking Spa Tub & Large Walk-In Closet
 - ◆ Distinctive Tile Floors, Countertops & Backsplashes ◆ Wood Floors In Study
 - ◆ Smart Energy Certified Builder: Low E2 Double Pane Windows, Radiant Barrier Roof Decking & Two 13+ SEER Carrier Puron A/C Units ◆ Tankless Continuous Flow Water Heaters
 - ◆ Gameroom Opens To Covered Balcony View ◆ Front Porch Plus Large Rear Covered Patio
 - ◆ Iron Staircase Spindles ◆ In Wall Pest Control System ◆ Quality Millwork & Fixtures
 - ◆ Pre-Plumbed For Water Softener ◆ Full Security System ◆ Structured Wiring Package
 - ◆ Builder Plan 3330 SF ◆ Gorgeous 1.09 Acre Corner Lot Loaded With Great Trees!
- ◆◆ Come Experience ... The Double Diamond Difference ◆◆



Building Lifelong Relationships Through Unique Innovative Design,
Architectural Detail And True Craftsmanship. Driven To Exceed
Buyer's Expectations With Personalized Service ... Honesty ... Results!
Whether You Own A Lot Or Looking For One ... We Can Help!
Double Diamond Custom Homes 210.493.5800



719 Loma Doble In Lantana Ridge



Thomas Lee * Direct : 210.771.0639
Email: Soldbylee@aol.com
Office: 210.490.7521 * Fax: 210.479.1052

